

Lord Howe Island meets Ian Kiernan

In 1969, Ian was an ambitious young knockabout Sydney builder/developer who controlled a \$15 million-dollar property empire, quite a substantial sum for this era. At around this time, he acquired the nickname 'Bicky'.

In 1970, Ian was impressed by a yacht owned by Jack Earl. Constructed in Huon Pine by Jock Muir at Battery Point, Tasmania, the yacht was launched in 1958 and christened 'Maris' after Jack's daughter. This was the boat with which Bicky fell in love at first sight - and still loved until his sad passing 48 years later.

Eventually a deal was done with Jack to purchase 'Maris'. It was no ordinary deal: Jack finished up with some money, some building works at his home overlooking Sydney's Mosman Bay and a new mate; Bicky finished up with 'Maris', a magnificent painting of her, lessons in seamanship and celestial navigation plus the finest mate and mentor for which any man could wish.

One of those lessons, and Bickys first ocean crossing, was a cruise to Lord Howe in 1971; Jack's grandson, teenager Ben Hawke, a very capable young sailor, accompanied them on the voyage, and still maintains a close association with the Island.

Bicky was introduced to other connections that would last a lifetime: a love of the untouched beauty of Lord Howe Island and a great many local friendships he established there. Since that first voyage, 'Maris' has completed more than 60 voyages to Lord Howe.

Ian made many friends within the Lord Howe Island community. In 1983 he took on Matthew Retmock as a building apprentice with his company Alfred Constructions, and also employed Terry and Wayne Shick. Many islanders have accompanied Ian on sailing voyages between Lord Howe, Sydney, Elizabeth Reef and Tahiti - including Mick and Paul Thompson, Terry Shick, Gary Payten, Matthew Retmock, John Green, and Island expat, Roley Dixon .

In 1996, Museum Curator, Jim Dorman, talked with Ian about his vision for a new Island Museum. In February, 1998, Ian set up the LHI Museum Trust to raise the funds to build a new museum. Over a two-year period the Trust raised the necessary funds. Architect Michael Tomaszewski was engaged, and he prepared three designs, one of which was approved by the Lord Howe Island Board. Construction began in 2000. The very best materials were utilised and the new Museum was officially opened in February 2001.

Ian continued to be involved in the museum's early years, bringing a team of builders to set up the Historical gallery with the artefacts held in the old museum. He also donated a valuable collection of whaling artefacts and books into the Museum collection. The Lord Howe Island community and visitors still enjoy the fine facility built by Ian Kiernan, which has been improved even further via a number of extensions - a storage annexe, an enlarged shop area, and a wider front veranda.

Twenty five years later, after extensive Pacific cruising representing Australia at the Admirals, Southern Cross, Dunhill, Clipper, Kenwood and Trans Pacific Cup, plus competing in the BOC

solo around the world yacht race setting an Australian record for a solo circumnavigation, Bicky wrote "*I have sailed into a thousand sun sparkled lagoons & not one of them comes close to matching the beauty of Lord Howe, a place where I have made innumerable friends.*"



Ian Kiernan and Jim Dorman at the opening of the new Museum in February 2001

Winter Museum Functions



In July the Museum hosted a group of students from Victoria University Wellington New Zealand on their eight day field trip for an Island Biology course.



In October the Museum hosted the opening Gala Night of the first Ocean Film Festival Week on the island. It was a fun event and so good to see so many young people at the Museum.



In September the Museum committee hosted a welcome function for a group of Trustees of the Hawaii National Tropical Botanic Gardens, at the start of their six day tour of the Island. One of the group, Hau'oli Wicheman, an experienced Pandanus weaver, held two workshops on making bracelets from local Pandanus leaves, which proved very popular with residents.



Citizen Science In winter 2018 the museum was the base for Citizen Science projects run in collaboration with the LHI Board and Marine Parks for locals and visitors.

Some of these activities involved visiting researchers such as Gerry Kraft (marine algae) Chris Reid (beetles), DD (coral identifications, Rochelle Ferris (turtles and seabird rescue). Other activities were carried out by museum staff Ian Hutton, Caitlin Woods and Sax Thompson.



Museum collection - Photographs

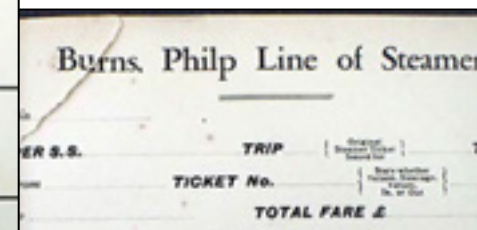
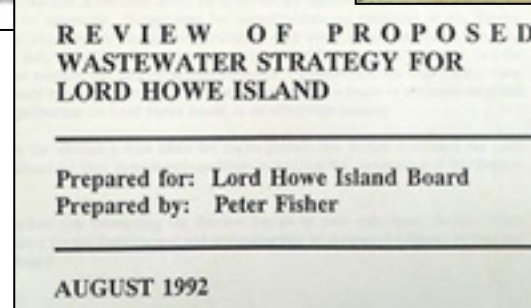
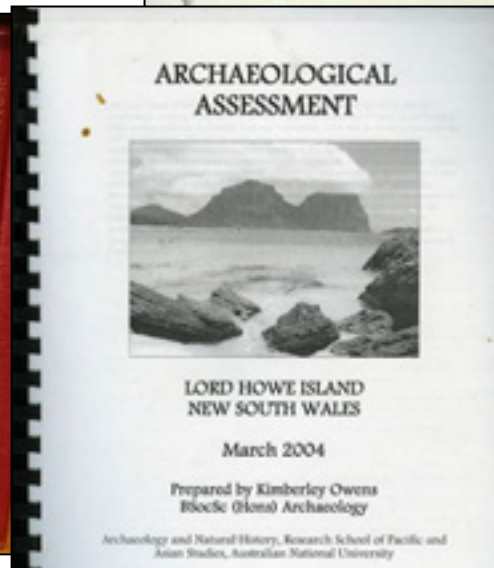
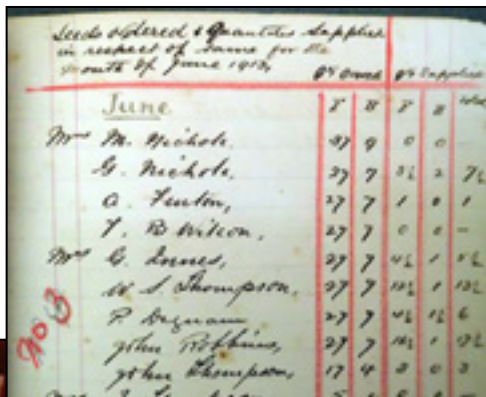
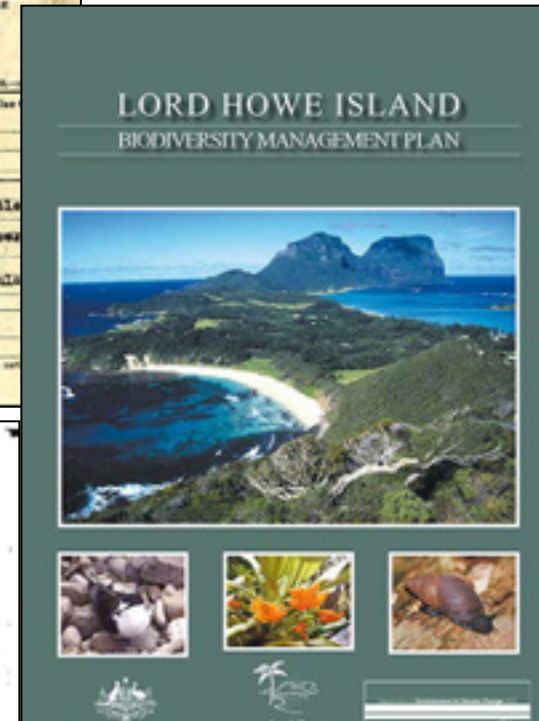
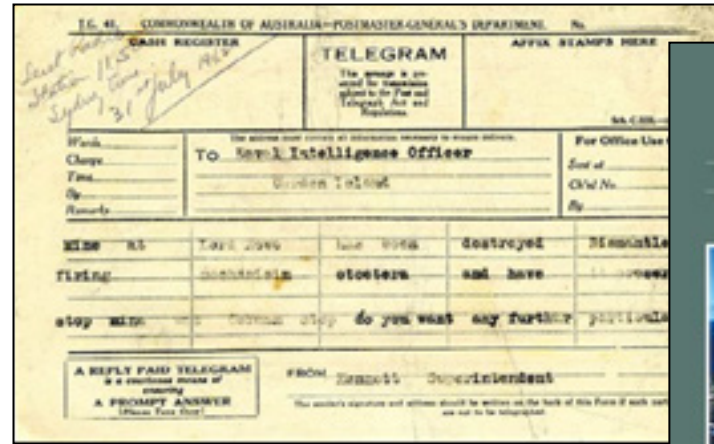
The Museum holds many original photos, negatives and photo albums dating from the 1880's. The backbone of this photo archive is the Dick Morris Collection. Dick Morris was resident photographer from 1931, producing a unique record of island events – weddings, boat building, school events etc. The first Museum Curator Jim Dorman secured the collection of Dick's negatives and these are stored at the museum. Many residents and visitors have also donated photos and albums to the Museum collection. In 2003 the Museum began a project to digitise the photo collection, and purchased a high quality scanner to scan the photos to archival quality. To date 5,324 have been scanned and digitised. The majority of these are on a photo catalogue system at the museum, which can be searched for places, people, buildings, boats, events, tourism and more. This is an ongoing project and residents can contribute to information about the photographs to add to the catalogue. Some of the collection is available for public viewing on iPads at the museum.



Museum collection - documents

The Museum holds many documents relating to the island's history:

- Lord Howe Island Board reports on various aspects of the island. These include documents involved in preparation for World Heritage Listing in 1982.
- Various original diaries, shop ledger books and lodge guest books donated by island families.
- Telegrams between the Board and the NSW government during the WWII years.
- National Parks and Marine Parks documents.



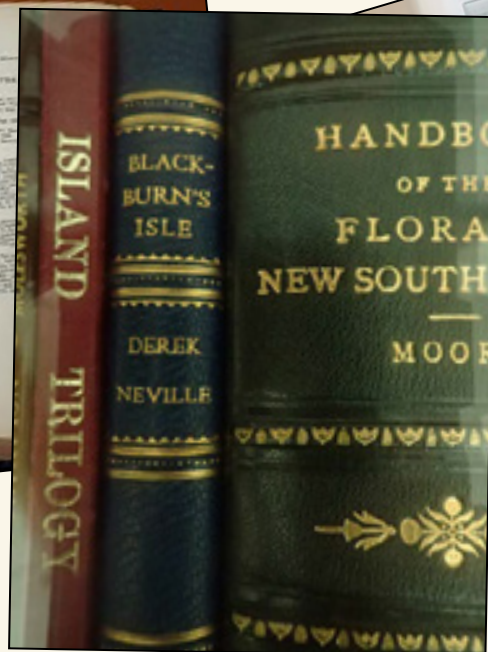
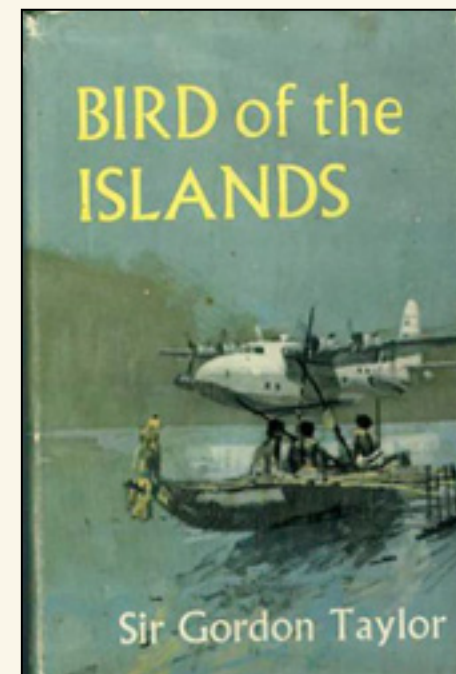
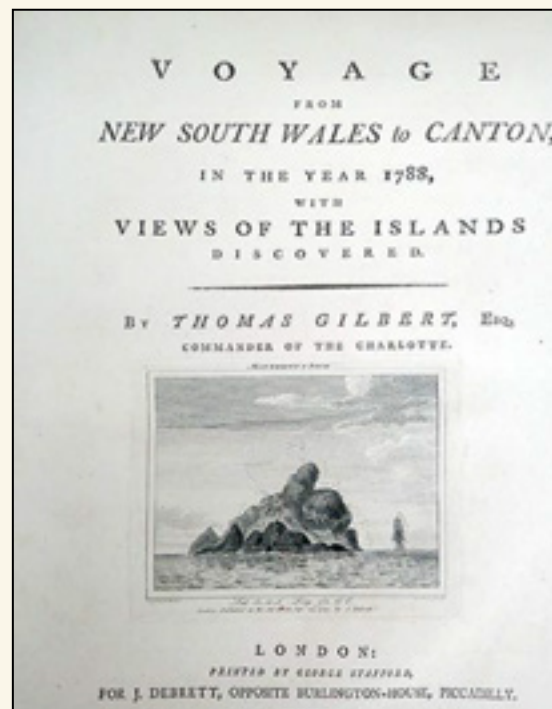
The Museum holds an extensive collection of Island newspapers. The first local newspaper was in the 1930's written by Will Whiting. In 1954 Jim Whistler and Trevor Nixon commenced *The Signal*. This was hand typed and reproduced on a spirit and ink print press known as a *Gestetner*. More recently the newspaper was reproduced with a photocopier machine. Jim had a break from September 1987 to October 1988 when Daphne Nichols produced a newspaper called *Sailo*. Jim then again ran the *Signal* until 2006 when Barney Nichols took it over and ran it until October 2014. Then Stephen Sia took over its operation, using a team of local contributors.

It is planned in 2019 to scan the entire newspaper collection into searchable PDFs and have these available on a computer at the museum for residents, tourists and researchers to access.



Museum collection - historical books

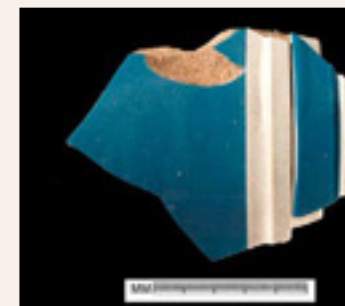
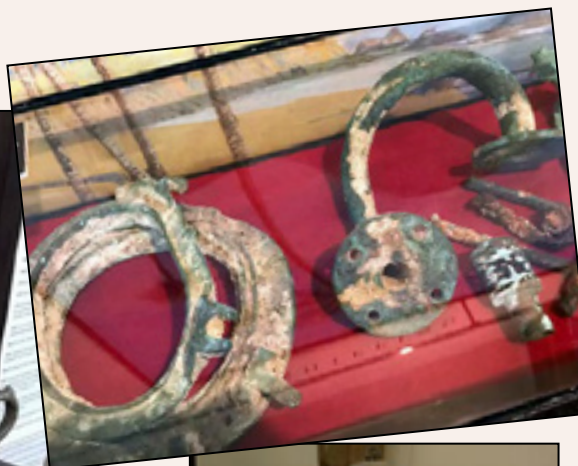
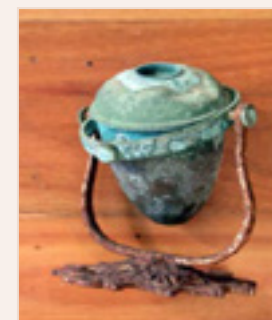
The Museum holds numerous reference books on the island's discovery, early history and whaling. The backbone of this library is a recently acquired collection from Hans Reuckert. Hans lived on the island in the 1970's and 1980's and collected books and maps from sources all around the World. In 2017 the Museum was able to purchase this valuable collection with the help of generous supporters. The Lord Howe Island Museum now holds the world's largest single collection of Lord Howe Island historical books. Some of these are on display in cabinets in the Historical Gallery; others are locked securely away but can be viewed in the library by appointment with the Curator or committee member. Some of these books depict the First Fleet voyage from London to Botany Bay in 1788, and the discovery of Lord Howe Island. Ian Kiernan collected and donated books on the whaling industry. Island families and the relatives of the first settlers (now in New Zealand) have donated family bibles to the Museum.



Museum collection - artefacts

At the time of forming the original museum in 1978, the Curator Jim Dorman collected many artefacts and items from the community. There is a wealth of items illustrating the island's past – communication equipment from the Aviation Department; everyday household items, farming equipment such as cream separators and corn huskers, whaling implements (donated by Ian Kiernan); shipwreck items including the ship's bell from the S.S. *Ovalau* donated by Greg and Ellis Whitfield.

In 2004 PhD student Kimberley Owens carried out a project on the early archaeology of the island. During this research she excavated several sites and uncovered what is believed to be the 1834 foundations of the very first cottage on the island, buried under sand in the Old Settlement paddock. She uncovered over 3,000 artefacts which, along with her research paper, are all lodged at the museum,



Museum collection - models

The Museum houses quality models of various items. These include two of the First Fleet ships, *Supply* and *Lady Penrhyn*, involved with Lord Howe Island's discovery; the 1850's American whaling ship *Charles W Morgan*; the *SS Morinda* that serviced the island with freight and passengers from 1932 to 1952. The Historical gallery houses two very large, scale models of the flying boats - a Catalina and a Sandringham built and donated by Gold Coast modeller, Geoff Reichelt in 1997. In 1982 the American Museum of Natural History donated a full sized model of the extinct Horned turtle skeleton. In 2014 Dick Smith sponsored the production of a very accurate scale model of Balls Pyramid.

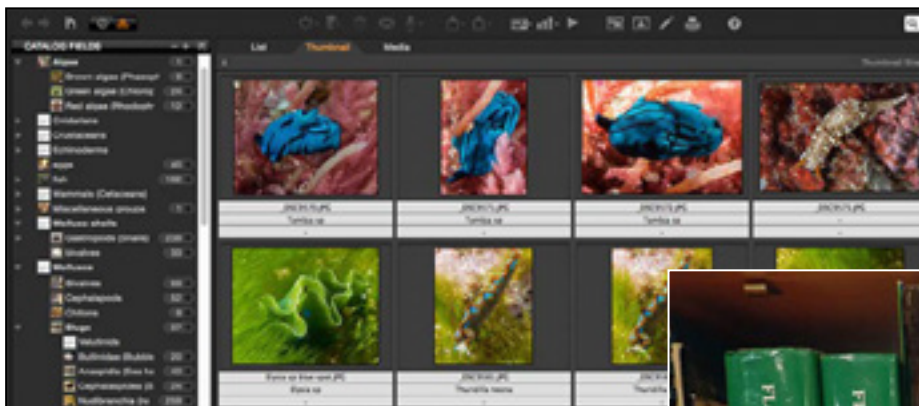
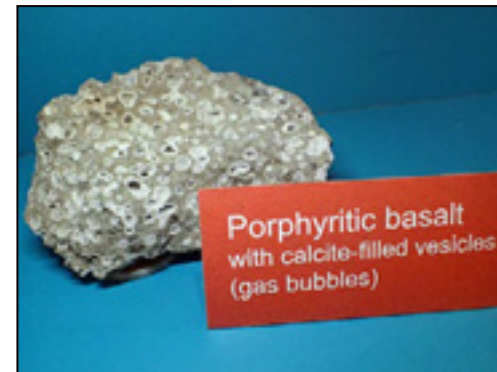


Museum collection - natural history

The Museum houses a number of collections of Lord Howe Island natural history items. These include marine snail shells collected and donated by many residents; collection of rock types found on the island; skeletons of other marine organisms; a collection of taxidermed birds that were collected dead and prepared by Tasmanian taxidermist Brian Looker (funded by *Detached* organisation).

The museum holds digital photo catalogues of Lord Howe Island invertebrates, marine life and fungi donated by Curator Ian Hutton

The Museum holds a reference book collection on island natural history. These include flora, fish, marine life, insects, geology. These are available for your perusal by appointment with the Curator or committee member.





Museum collection - Original artworks and photographs

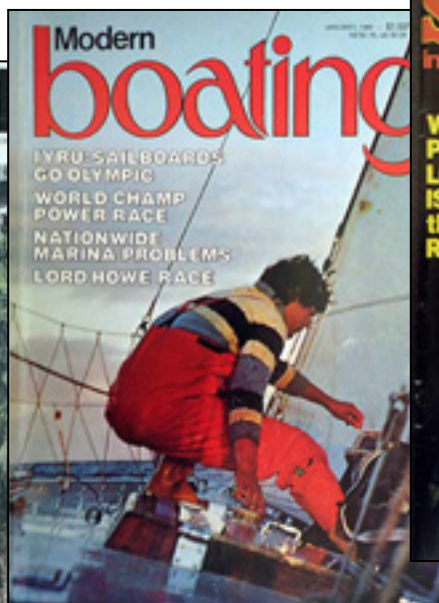
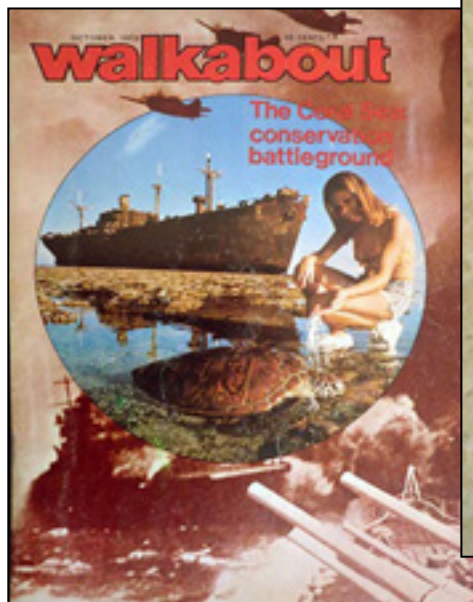
The Museum houses original artworks, photographs and limited edition prints including:

- original black and white photographs hand printed by Max Dupain in the 1970's, donated by his daughter Danina Anderson.
- two of Jack Earl's original oil paintings – one depicting the *Supply* at the time of discovery of Lord Howe Island; the other depicting the early Island trading boat *Sylph* in a storm off Ball's Pyramid.
- three original paintings by Irwin Weber done in the 1970's.
- a set of two Island bird posters done by artist Kevan Hardacre in the 1980's.
- several prints of extinct birds from 1790 publications.
- Original artworks by local artist Margaret Murray as part of the Environmental Gallery displays.
- a watercolour commissioned by the owner of the ship *Ovalau* that burnt off LHI in 1903.

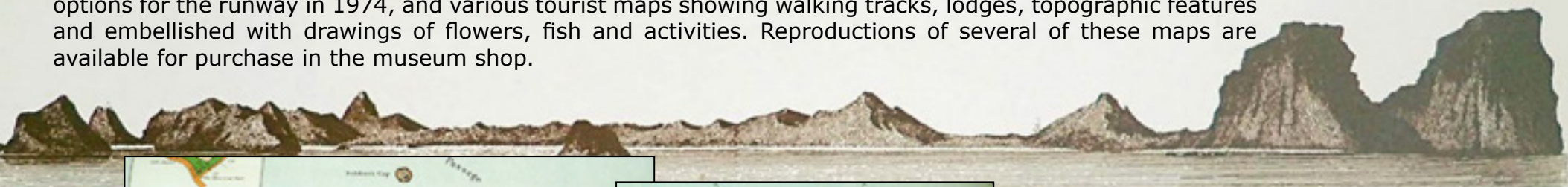


Museum collection - magazines

The Museum holds a large range of popular magazines that have published stories about Lord Howe Island.



Museum collection - maps The Museum holds an extensive collection of maps of the Island. The prize of these is an original 1853 map acquired as part of the Hans Reuckert collection in 2017. This map was prepared from data given to a Sydney mapmaker by the British research ships *Herald* and *Torch* in 1851. The map shows detailed water depths around the island and is the very first map showing the farm holdings at the time. This may be the only first edition in existence. Other maps detail the island leases, some original drawings of options for the runway in 1974, and various tourist maps showing walking tracks, lodges, topographic features and embellished with drawings of flowers, fish and activities. Reproductions of several of these maps are available for purchase in the museum shop.



A CHART of LORD HOWE ISLAND,
 Discovered by
Lieut. Henry Lidgbird Ball,
 in his
 Majesty's Arm'd Tender Supply,
 On the 17.th of Feb^r 1788.
 Lat. 31.36 S.
 Long. by Moon & Star, 159. 6.4 East.
 Variation 10 East.

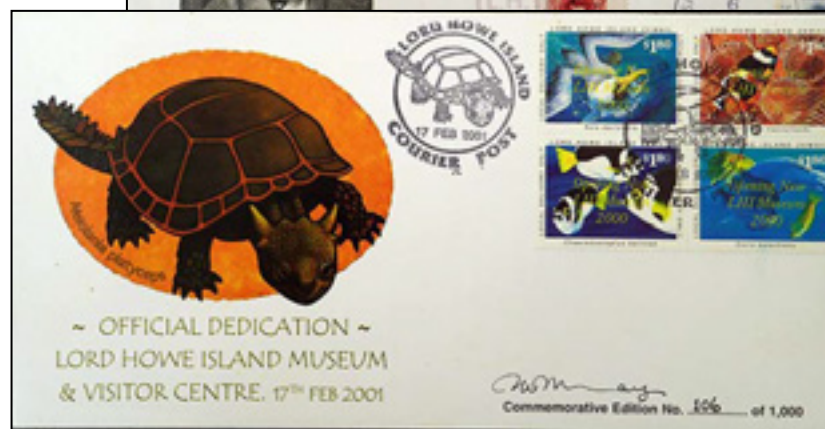
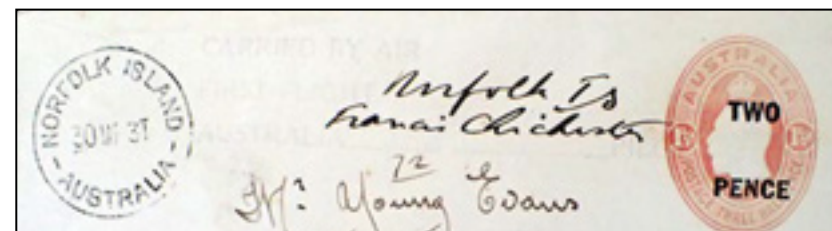


Museum collection - Stamps.

There has been interest in Lord Howe Island by philatelists for over a century. Many philatelists have sent letters and postcards to be stamped with the Lord Howe Island Post Office postmark. And there have been a number of commemorative envelopes and stamps depicting Lord Howe Island. In 2003 the Museum purchased the world's largest single collection of Lord Howe Island philatelic material from collector Bill Mayo.



Highlights of this collection include the Lord Howe Island 1920 provisional stamp which is an Australian penny halfpenny Stamp overwritten to two pence by the then Post Master Stan Fenton Snr.



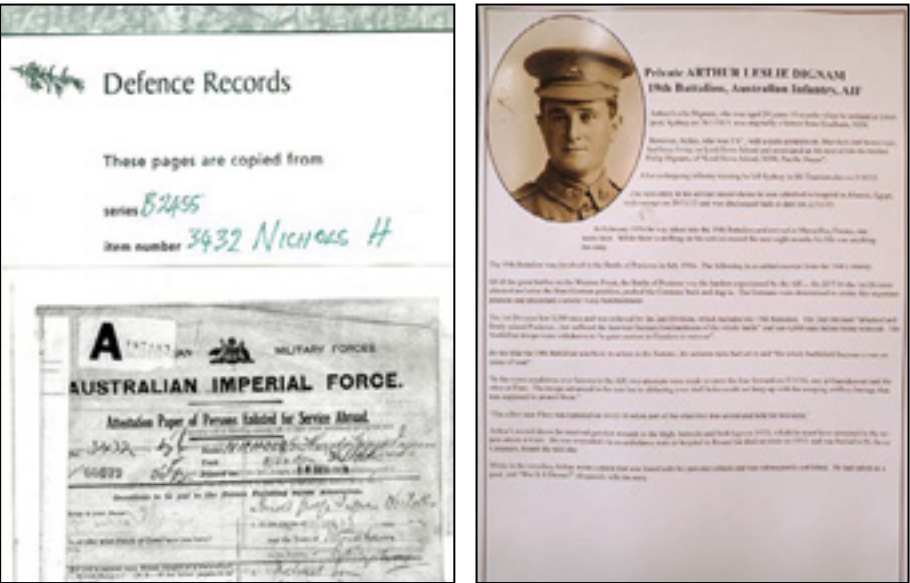
Museum collection - Oral and video histories

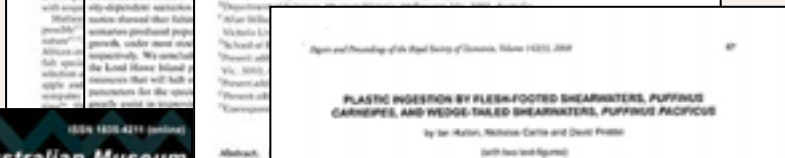
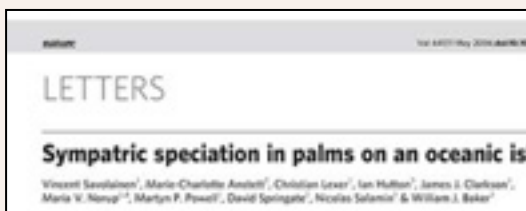
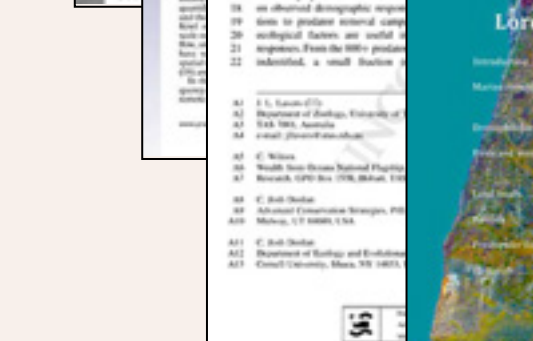
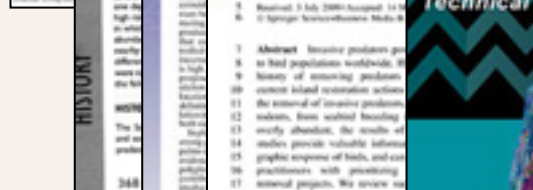
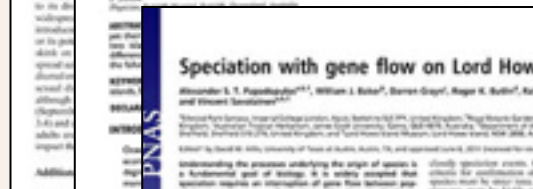
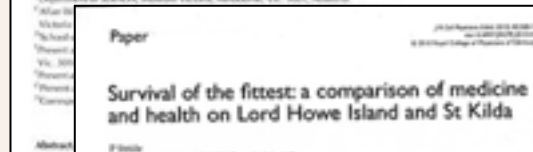
The Museum holds a collection of original oral and video recordings of residents and visitors. The earliest of these were collected by our historian Chris Murray in the 1970's, including interviews with Phil Dignam and Lil Wilson. More recently James and Leonie Furber sponsored a series of video interviews with residents carried out by Chris Murray with our associate videographer Dick Collingridge. Current Curator Ian Hutton has also compiled a number of video interviews with researchers and residents – Peter Fullagar, John Disney, Glenn Fraser & Pete McLelland. These recordings are securely archived on the museum digital platform.



Museum collection - RSL records

Former Museum secretary Sue Nichols obtained service records of all those who enlisted from the island in the various wars, from the Australian War Memorial in Canberra. The Museum collection also contains medals and photographs from various island servicemen.



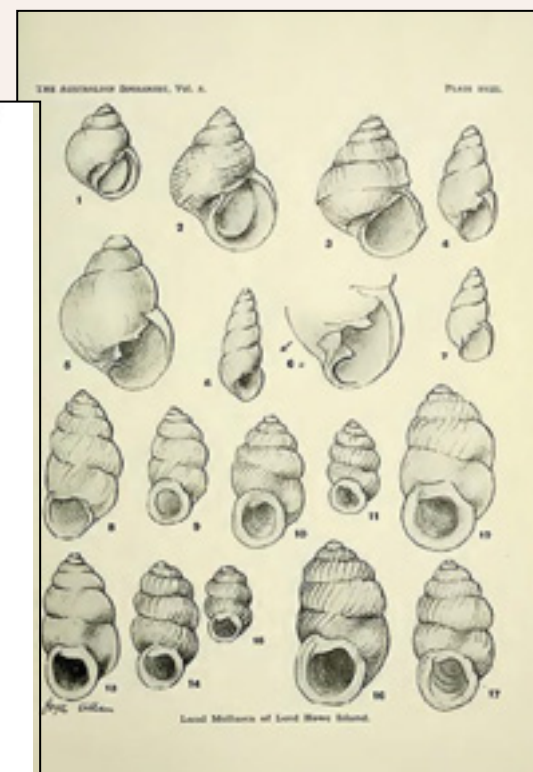


Museum collection - Science papers.

There have been many scientific studies on Lord Howe Island dating back to the 1850's.

The Museum holds an extensive collection of science papers on various research topics of the island. These include the flora, invertebrates, seabirds, landbirds, marine life, geology, conservation, Middleton and Elizabeth Reefs.

More recent articles are digital PDFs; many older ones are original documents, which we plan to scan and add as searchable PDFs to the collection that will be available on computers at the museum.



become a member and support your museum



Visit the Coral Cafe for coffee and lunch each day; and evening meals 3 nights weekly.



See the displays in the History Gallery and the Environmental Gallery.



Browse the Museum shop for books, maps, and a range of quality island crafts, paintings and photographs.



Learn about the island's flora, fauna and history at the evening lecture program. Sunday general introduction, Monday history and conservation, Thursday birds, Friday marine life. All 5.30 to 6.30pm.



Enjoy seeing the LHI phasmid - the Museum holds a small number for public viewing.



You can purchase our 2019 calendars at the shop, or email: curator@lhimuseum.com
 Colour Flying boat calendar \$16
 Colour seabird calendar \$16



Museum collections

Historical artifacts. These date from 1790 to the present day. Most items are on permanent display, with some additional items in storage. All items are listed on a computer database.

Photographic collection. Over 3,000 photographic prints, negatives and slides have been scanned, digitized and catalogued. These can be viewed in our history gallery. Prints can be purchased on request.

Environmental displays. Stunning photographs, informative text, and audiovisual media highlight the World Heritage values of the Island.

Library. Reference books, scientific papers, reports, original manuscripts and notebooks relevant to natural and cultural history of the Island can be viewed by arrangement.

Native plant herbarium. This comprises an extensive collection of pressed specimens of Island plants.

Visit the museum to enjoy our displays, shop, cafe, Visitor Centre, and chat to our desk volunteers.

Discover the fiery origins of Lord Howe Island from a volcano seven million years ago. See the fascinating processes that plants and animals used to cross vast ocean distances to colonise the island. Investigate the evolutionary processes that led to the development of many endemic species.

Learn about the Island's unique environment and cultural heritage at regular audiovisual lectures, or attend presentations by visiting scientists.

Contribute to the development of this world class museum by donations or sponsorship of specific projects. All donations are tax deductible.

Support the museum by becoming a member. Membership form enclosed or available online.

PO Box 11
Lord Howe Island NSW 2898
Australia

MEMBERSHIP LORD HOWE ISLAND MUSEUM

We value community support, and wish to encourage you to renew your membership or become a new member, by completing this application form and returning to:

Lord Howe Island Historical Society
PO Box 11
Lord Howe Island
NSW 2898
email: curator@lhimuseum.com

Name:

Address:

Email:

Attached is \$ _____

- ☐ Individual Membership \$11
- ☐ Family Membership \$22
- ☐ Business Membership \$55
- ☐ Donation

All donations over \$2 are tax deductible.

THANK YOU FOR YOUR SUPPORT

For internet transfers and donations:
Lord Howe Island Historical Society and Museum Inc
BSB 062001
Account 00928037