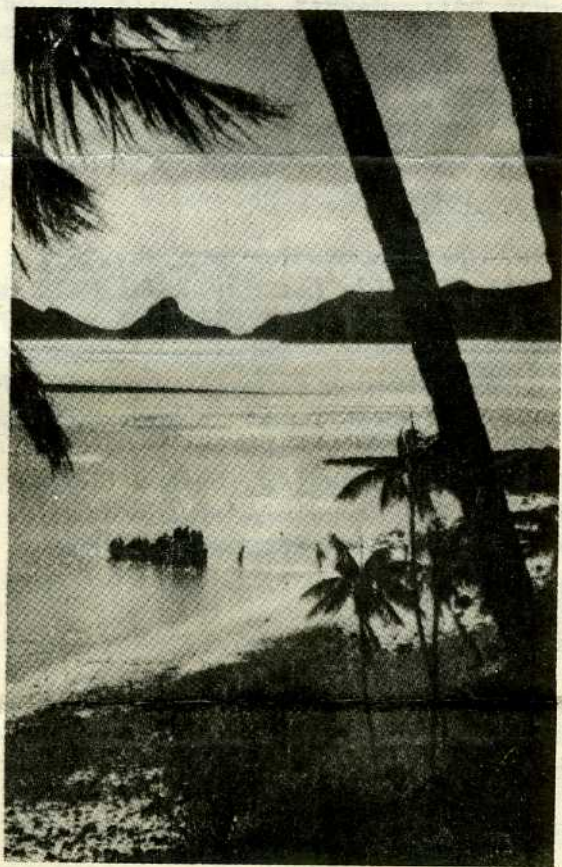


LORD HOWE ISLAND.

GUEST HOUSES



Tropical paradise 420 miles north-east of Sydney,
and 300 miles east of Port Macquarie.

AVALON GUEST HOUSE

(Prop. F.N. Olsen)

Tariff £12.12.0. per week, 36/- per day. Guests are transported by utility truck from the jetty on arrival and departure, for which a charge of 5/- per person is made. Electric light, trips & excursions arranged. Within comfortable walking distance of lagoon and surf. Excellent table provided.

BANYAN GUEST HOUSE

(Prop. W.G. Thornton)

Tariff ~~48/- per day.~~ *£17/17/- per week* ^{ALL} Single rooms 51/- per day. Accommodates 15 people. Morning, afternoon teas and suppers provided. 240V.A.C. electricity, hot and cold water. All inner spring mattresses. Septic system, table tennis, deck quoits, etc. Projector - bring your own slides. Specialise in home cooking. Milk, cream, butter, eggs and poultry from our own farm. Picnics, hikes, barbecues arranged.

LEANDA-LEI GUEST HOUSE

(Prop. R. Wilson)

Tariff ~~£16.16.0. per week, 48/- per day.~~ (After 3rd Jan. 1961 increase to £17.17.0. per wk. 51/- per day.) Children under 12 years, half rates, except between December 24th & April 30th. Special quotes for parties of 8, or more. Morning & afternoon tea & supper included in tariff. Conducted outings in cruiser "Viking 11" include fishing, picnics, cruises round Island, sightseeing, coral excursions, etc. Free. Modern house, large lounge, recreation room, patio and lawns. Septic system, bath & shower rooms. Hot water service. 240V electricity. One minute from lagoon, close surf beaches, bowling green and recreation area.

OCEAN VIEW GUEST HOUSE

(Prop. A. Wilson)

Tariff £16.16.0. per week, 50/- per day. Children under 12 years half rates, under 4 years, quarter rates. Reading room, tennis court, radio, table tennis, dances, cruises, tours, picnics, fishing. 240V power. Hot water. 20-passenger glass bottom boat for viewing coral inside lagoon. Speedboat, aquaplaning and water skiing. 34ft. diesel yacht "Bosun Bird". Right at the Flying Boat Terminal with beaches a few minutes away.

TRADE WINDS

(Props. Messrs Mercier & Redhead)

Tariff £17.17.0. per week. Children under 12 years £9.9.0. First class accommodation with septic system. Caters for 11 guests. Excellent meals. Stereo music. Picnics. Car for fishing trips, etc.

PINETREES GUEST HOUSE

(Prop. Mrs. E. Kirby)

Tariff £17.10.0. per week, 50/- per day. Winter tariff £15.15.0.
Twin rooms, or single. Suites with hot and cold showers, innerspring
mattresses, private verandahs, tariff 70/- per day. Half minute to
Lagoon. Tennis court, lounges, dance floor, table tennis, billiards,
240V power, septic system, hot & cold water. Picnics, barbecues,
launch trips in lagoon, coral reef and snorkelling excursions all
included in tariff.

SOMERSET HOUSE

(Prop. A. Williams)

Tariff £17.17.0. per week, 51/- per day for twin accommodation.
£19.19.0. per week, 57/- per day for single accommodation.
Centrally situated in ideal flora surroundings. Caters for 32 guests.
Twin & single rooms. Excellent table with beautifully prepared home
cooked meals. 240V power. Tiled bathrooms and toilets.

VALDON GUEST HOUSE

(Prop. H.O. Payten)

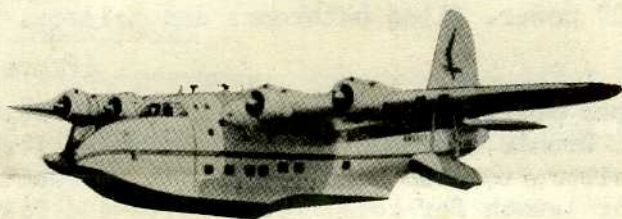
Tariff £16.16.0. per week. Septic tank.
Water to bedrooms. Double & single rooms. Land Rover for transporting
guests to & from aircraft, also used for visits to beauty spots on the
Island. 20ft. motor launch for coral reef visits and fishing. We cater
for real fishing. Billiard table. Excellent home cooking.

.

WHAT TO WEAR Dress is completely informal. It is not necessary to
take a great many clothes, but the essentials are shorts
and sports wear, swimsuit, sunglasses, windbreaker, walking shoes,
cardigan, sandshoes; and don't forget a torch and your camera. In
the Guest Houses it is usual to change for dinner at night - men into
sports slacks and coat, and women into frocks.

MEDICAL FACILITIES. A doctor and hospital facilities are available.

HOW TO GET THERE. As there are no regular shipping services to
Lord Howe, you go there by air - a pleasant prelude
to your island holiday. You wing your way from Rose Bay, Sydney, on
board a giant, double-decker, four engined flying boat. Your crew
are friendly, highly trained people whose chief thought is your
comfort. Planes come and go from Lord Howe only at high tide, which
is why early morning departures are often necessary.



AIRLINES OF NEW SOUTH WALES PTY. LTD.