

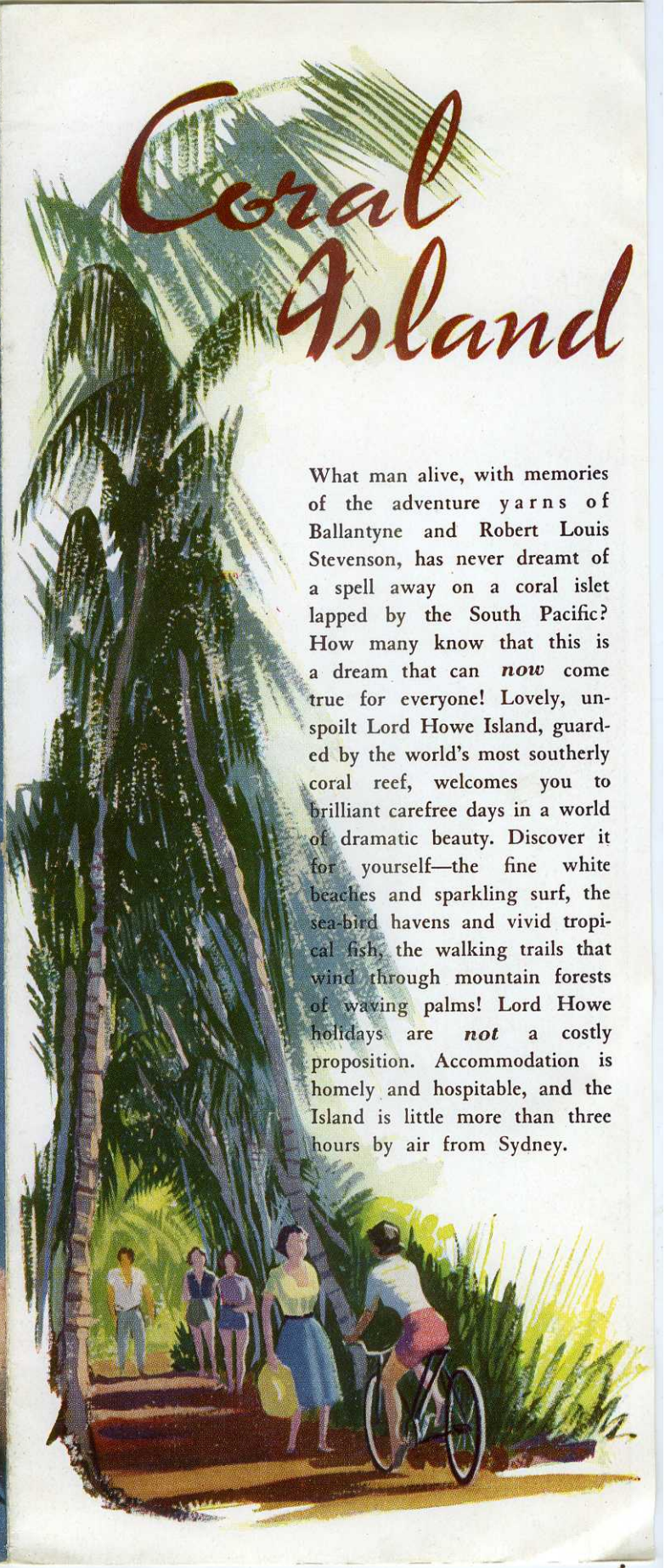


Lord Howe

I S L A N D

Coral Island

What man alive, with memories of the adventure yarns of Ballantyne and Robert Louis Stevenson, has never dreamt of a spell away on a coral islet lapped by the South Pacific? How many know that this is a dream that can *now* come true for everyone! Lovely, unspoilt Lord Howe Island, guarded by the world's most southerly coral reef, welcomes you to brilliant carefree days in a world of dramatic beauty. Discover it for yourself—the fine white beaches and sparkling surf, the sea-bird havens and vivid tropical fish, the walking trails that wind through mountain forests of waving palms! Lord Howe holidays are *not* a costly proposition. Accommodation is homely and hospitable, and the Island is little more than three hours by air from Sydney.






Island

Lord Howe Island, a minute and spectacular fragment of New South Wales, is the largest of a cluster of rocky islets, 420 miles north-east of Sydney, and 300 miles east of Port Macquarie. Only seven miles long and mostly about a mile across, Lord Howe contains some 300 acres of rich lowland and a jumble of romantically beautiful mountains. Two massive peaks stand watch over the entire scene—Mt. Lidgbird (2,504 feet) and the nearly perpendicular Mount Gower, which soars away to 2,840 feet. Volcanic in origin, the island is a serene and friendly spot to-day, with no volcanos, no earthquakes and no snakes or venomous animals of any sort! You enjoy every minute of your stay at Lord Howe. The climate is magnificent. Rarely is it warmer than 80°F. or cooler than 60°. Even in winter, bright days are the rule, and frosts are unknown. The sunny mornings call you to the surf at Blinky and Ned's beaches, or to the quiet waters of the lagoon, often furrowed by launches and aquaplanes. Boats are on hand for fishing, trips to the coral and daylong voyages around the archipelago. Garfish, Trevally, Salmon, Rock Cod, and Lord Howe Bluefin abound. Some boats are fitted for work among the Yellow Fin Tuna, Spanish Mackerel and Marlin, which cruise in the offshore waters of Lord Howe and Ball's Pyramid, a rocky pinnacle, 10 miles away, which rises sheer to 1,850 feet above the Pacific. For the hiker, cyclist and mountaineer, Lord Howe has a maze of paths that lead away to the palm-filled Erskine Valley, Mt. Eliza, and a dozen other spots. Tennis courts and bowling-greens are excellent, too. Guest houses organise dances and barbecues, and films are shown frequently in the local hall. A Public


NSW
SYDNEY

ASATON

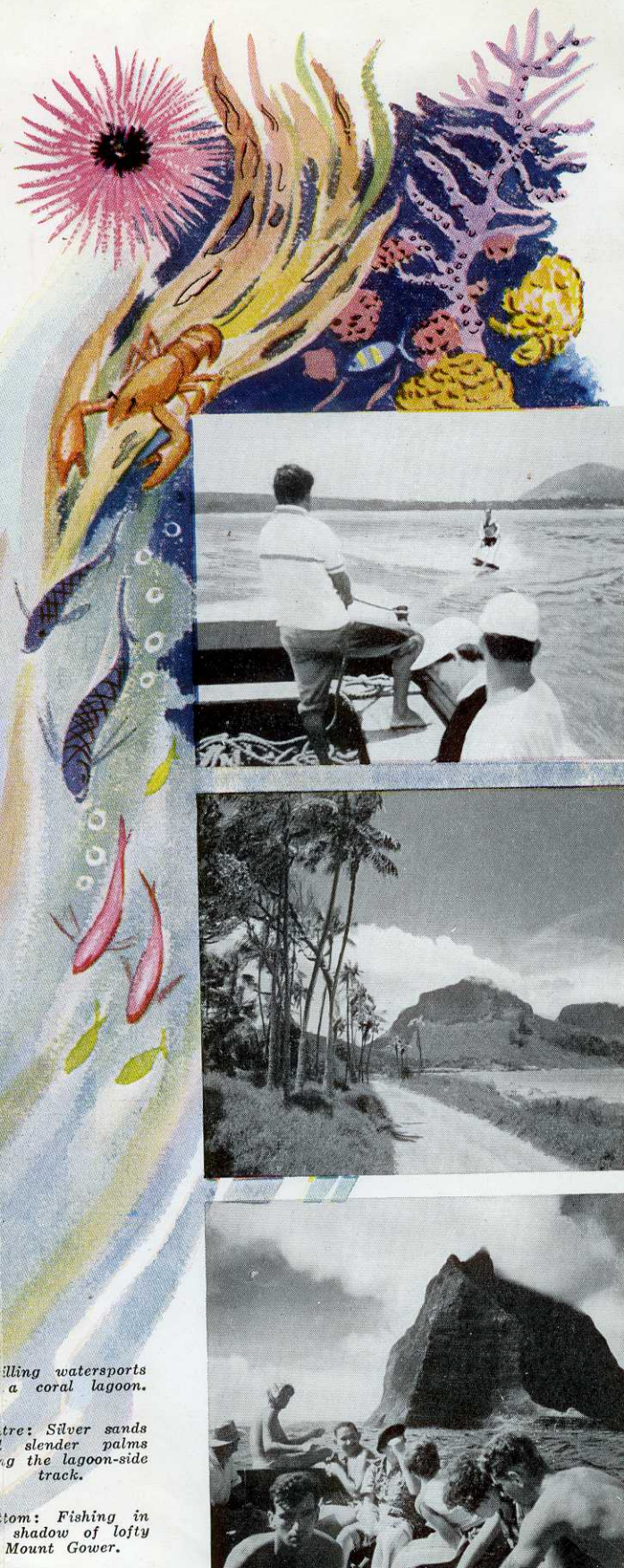
Adventure



Liquor Store, Banking and Postal facilities, as well as an Anglican and a Seventh-Day Adventist Church, are located in the main settlement. Both Lord Howe and the nearby Admiralty Islands form a bird sanctuary alive with Gannets, Wide-awake Terns, and Bosun Birds. Mingling with the flightless Woodhens, Silver Eyes, and Blue Cranes, great flocks of Mutton Birds use Lord Howe as a breeding ground on their mysterious trans-oceanic journeys. The island's bird-life, vegetation and coral are, of course, all protected by law.



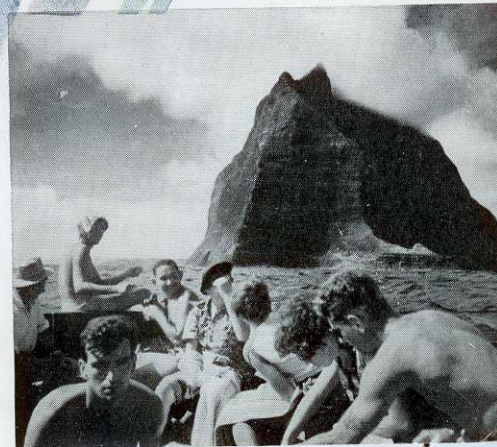
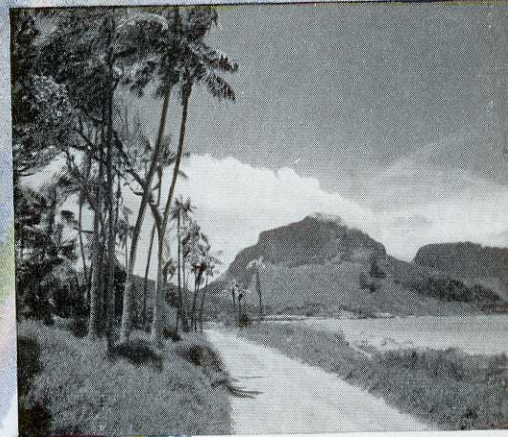
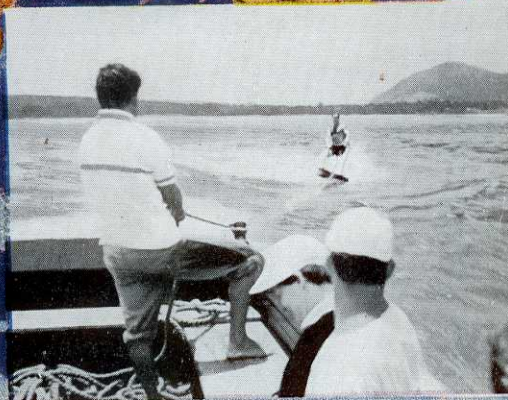
Lord Howe Island was discovered in 1788 by Lieutenant Henry Lidgbird Ball, and named after famous Admiral Richard Howe, then First Lord of the Admiralty. Settlement began in the 1830's, the people growing fruit and vegetables which were eagerly bought up by visiting whalers. Later the community paid its way by gathering the seed of the beautiful *Howea* or *Kentia* palms for the world market. These delicately fronded "Paradise Palms" (as the Americans call them) are unique to Lord Howe, and predominate in the Island's lush jungles of pisonia, hibiscus and banyan trees. Their seed keeps fresh for months, while the plants succumb to few diseases and are unsurpassed as interior decorators. Although there is still a big demand for palms, Lord Howe Islanders are nowadays mainly interested in entertaining their growing crowds of visitors. Island affairs are managed by the Lord Howe Island Board, which levies a tax of one shilling per day on each visitor. This money is spent on improvements designed to benefit local residents and to develop the Island's holiday attractions for the delight of future vacationers.



Thrilling watersports on a coral lagoon.

Centre: Silver sands and slender palms along the lagoon-side track.

Bottom: Fishing in the shadow of lofty Mount Gower.





Paradise Landscape—Lord Howe from Malabar Hill.



A launch party at the coral gardens.

Lord Howe and the Admiralty Islands from Mt. Lidgbird.



Only three hours

TO CORAL AND FLOWERS

As there are no regular shipping services to Lord Howe, you go there by air—a thrilling prelude to your island holiday. You wing away from Rose Bay, Sydney, on board one of Ansett's big double-decker, four-engined flying boats. In next to no time, your 42-seater 'plane is touching down on the rippling surface of Lord Howe Lagoon. Those handling your aircraft—Captain, First Officer, Flight Engineer, Flight Stewards and an Air Hostess—are friendly, highly-trained people whose chief thought is for your comfort. 'Planes come and go from Lord Howe only at high tide, which explains why early-morning departures are often necessary. Coaches leave Ansett Travel Service Headquarters, 129 Phillip Street, 70 minutes before the aircraft moves off from Rose Bay. Passengers may take a **free** allowance of 35 lbs. of luggage. Anything additional is carried at current freight rates. On the question of packing: don't load up with a lot of smart clothes! Dress at Lord Howe is informal. Essentials are shorts, sportswear, windbreaker, cardigan, walking shoes and sandshoes. House-guests usually change for the evening meal: men into slacks and coat; women into frocks. (Remember to take your camera and a torch!) Lord Howe holidays are **very** popular. Be wise and book your flight and accommodation well in advance. Detailed information and bookings are available from—

N. S. W. GOVERNMENT TOURIST BUREAU
Challis House, Martin Place, Sydney — BL 2471

ANSETT AIRWAYS PTY. LTD.
129 Phillip Street, Sydney — BW 2921
(as well as at all Ansett offices and agencies throughout Australia)

Published by the N.S.W. Department of Tourist Activities and Immigration, in conjunction with Ansett Airways Pty. Ltd. and the Lord Howe Island Board. Printed by C. C. Merritt Pty. Ltd., Sydney.

