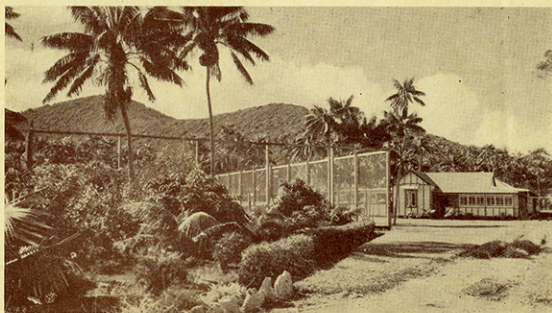


OCEAN-VIEW . . . the comfortable Island Guest Home



The approach to Ocean-View showing tennis court, lawns, gardens, etc.

FACING the lagoon and conveniently situated, Ocean-View is delightfully set amidst a grove of stately palms and surrounded by a profusion of tropical foliage. Comfortable lounge, large and cool verandahs, music, radio, splendid dance floor, tennis court, excellent cuisine, refrigerator, electric light and good water supply. Well-furnished bedrooms, bathrooms, showers and laundry. Delicious tropical fruits, green vegetables, abundance of fresh milk, cream, eggs, fish, poultry and good home cooking.

A powerful, sea-going launch, for which no extra charge is made, is used for entertaining visitors. Fishing and pleasure trips, coral reef excursions, picnic and mountaineering parties are arranged. Ocean-View is renowned for its enjoyable dances. The services of an entertainer are retained to cater for the social requirements of guests.

Ocean-View for the holiday you will always remember.

Looking south from drive leading to Ocean-View showing Mt. Lidgbird and Mt. Gower.



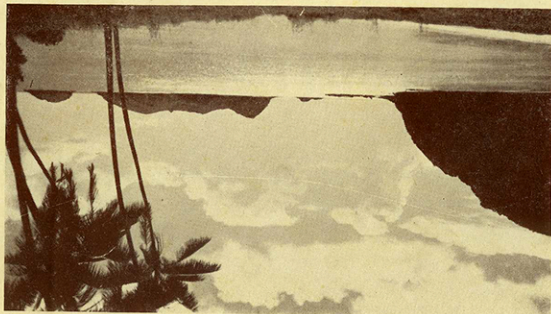
FOR THE HOLIDAY YOU WILL ALWAYS REMEMBER

Lord Howe Island is about seven miles long, narrow and crescent shaped, with two majestic mountains at the southern end—Covey and Lighthouse. The reef on the west coast of the island encloses the lagoon, teems with striped and speckled fish of every shape and hue—thrilling sport awaits you if you are an angler. . . . Swim in safety in the crystal-clear water of the lagoon, or plunge in the curling breakers of the blue Pacific Ocean. Play Bowls, Cricket, Tennis. Truly a place for an enchanting holiday.

The Isle of Your Dreams



*View of lagoon from
Lovers' Bay looking
north, showing flying
boat anchorage in the
foreground.*



*The Admiralty
Islands and Ball
Sanctuary looking
from Ned's Beach.*

WHETHER the desire be for restfulness and peaceful walks into the beautiful wilderness of hill and vale, Lord Howe Island, with its wealth of mountain and tropical scenery, is ever calling—a veritable artists' Arcadia. . . . Fanned by the breezes of the trade wind and washed by a warm sea current, Lord Howe Island with its brilliant sunshine has a mild winter and a pleasant summer, temperature seldom above 80°.

OCEAN-VIEW GUEST HOUSE LORD HOWE ISLAND

TARIFF

June to September £4/10/- per week


October to May £5/5/- per week

All above charges are inclusive, all entertaining, launch trips, etc., are free.

Single rooms extra. Children under 14, half rate; under 4, special arrangements.

For further information, accommodation, transport, etc., radio or write A. & R. Wilson, Lord Howe Island, or apply to David Jones' Travel Service.

TRAVEL BY AIR OR BY SEA



Lord Howe Island calls you...